

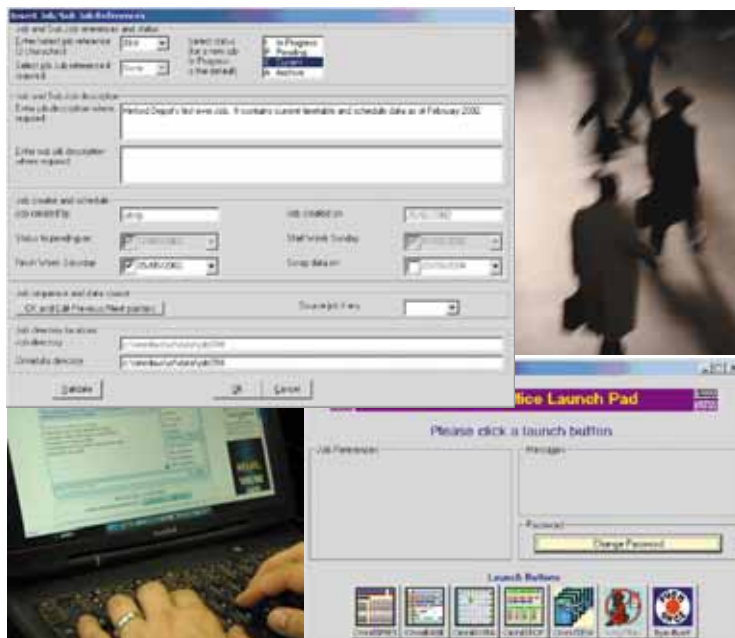
OmniMAN

When purchasing a range of Omnibus solutions, it makes sense to want to tie them together - to be able to control the programmes and data from a central point. **OmniMAN** is the file management system from Omnibus Systems, which enables all users within a company to structure their data in an orderly and consistent fashion. This includes the ability to create and manage data over time and automatically back up critical data.

In addition, **OmniMAN** includes facilities for launching and administering the use of all the other Omnibus products, hence its opening form includes the phrase 'Schedules Office', the generic name for the whole product family.

The backup of timetables and schedules from each local machine to a company file server is automated. This way the file server becomes an integral part of the **OmniMAN** system as a safe repository for a complete set of the companies timetables and schedules.

For an organisation wishing to get maximum benefit from Omnibus solutions, **OmniMAN** is the ideal way to organise and share information



KEY FEATURES

- ▶ Create & manage critical data
- ▶ Control Omnibus modules from one point
- ▶ Link Omnibus solutions across a network
- ▶ Automatically back up critical data
- ▶ Optimise user experience of Omnibus products

KEY BENEFITS

- ▶ Greater control though central control point
- ▶ Greater efficiency from a common database
- ▶ Protect essential data with back-ups